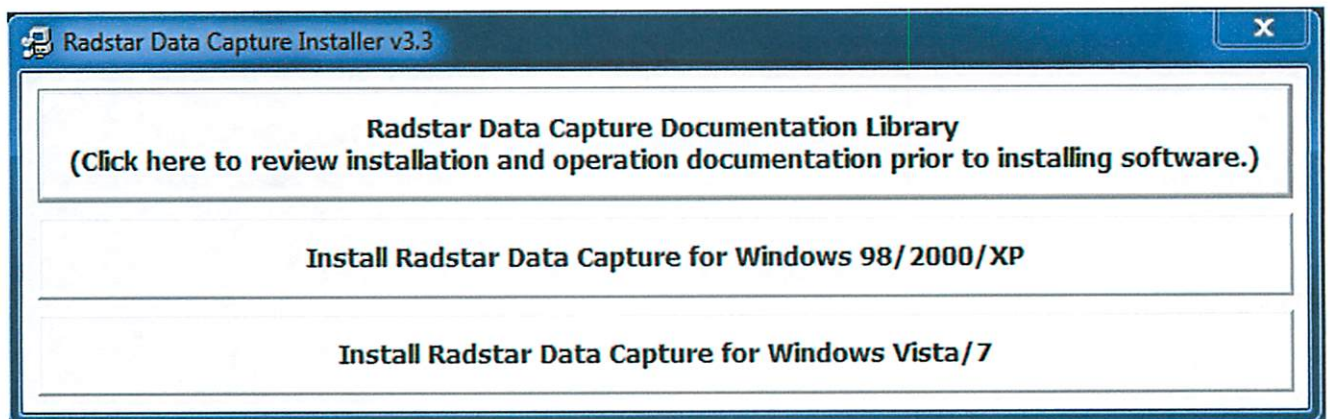


Install RadStar Data Capture Program

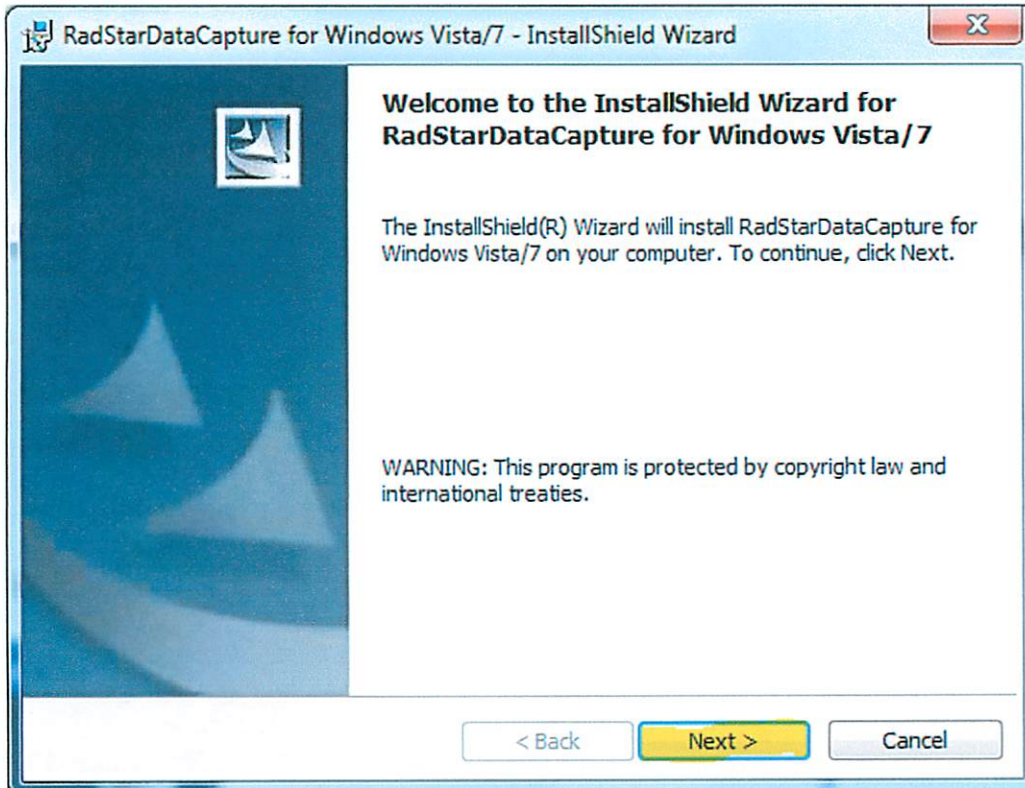
Note that if any earlier revisions of the RadStar Data Capture Program have been installed previously these versions must be Uninstalled prior to installation of the latest release.

Note: Windows Vista Instructions where different are shown [xxxxxx "XXXXX"]

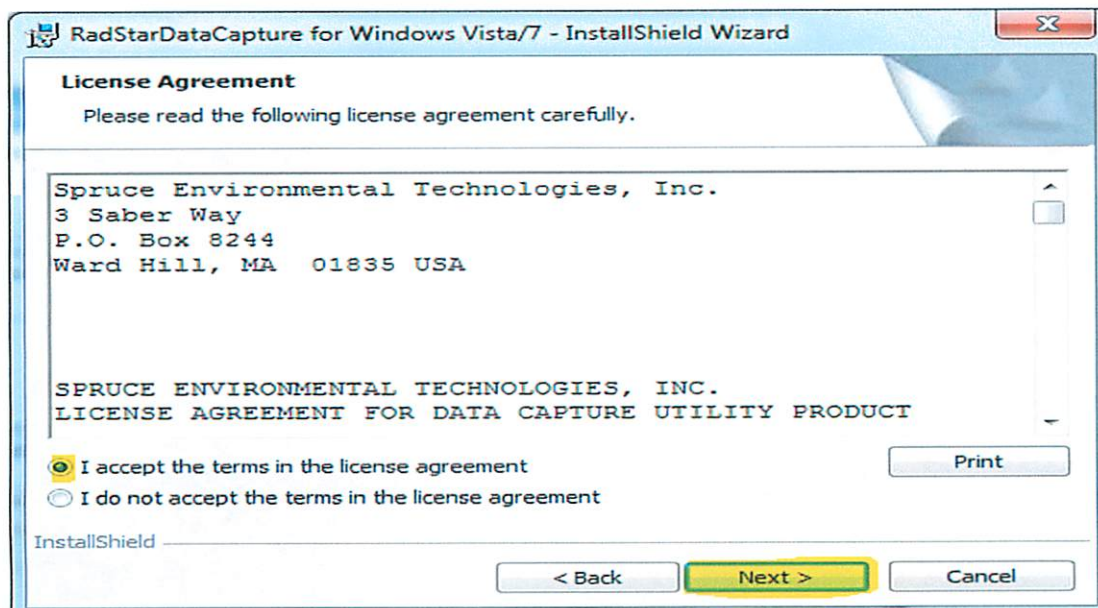
1. Insert the RadStar Data Capture Disc into the Cd Drive. [In Vista systems click **"Allow"** in the pop up User Account Control Window (not shown)]. A **"RadStar Data Capture Installer"** window will appear. It is recommended that prior to installation all documentation is first reviewed. To do this click on the **"Radstar Data Capture Documentation Library"** button. After reviewing the appropriate documentation click on the button appropriate to your operating system to begin the installation of the "Radstar Data Capture Utility".



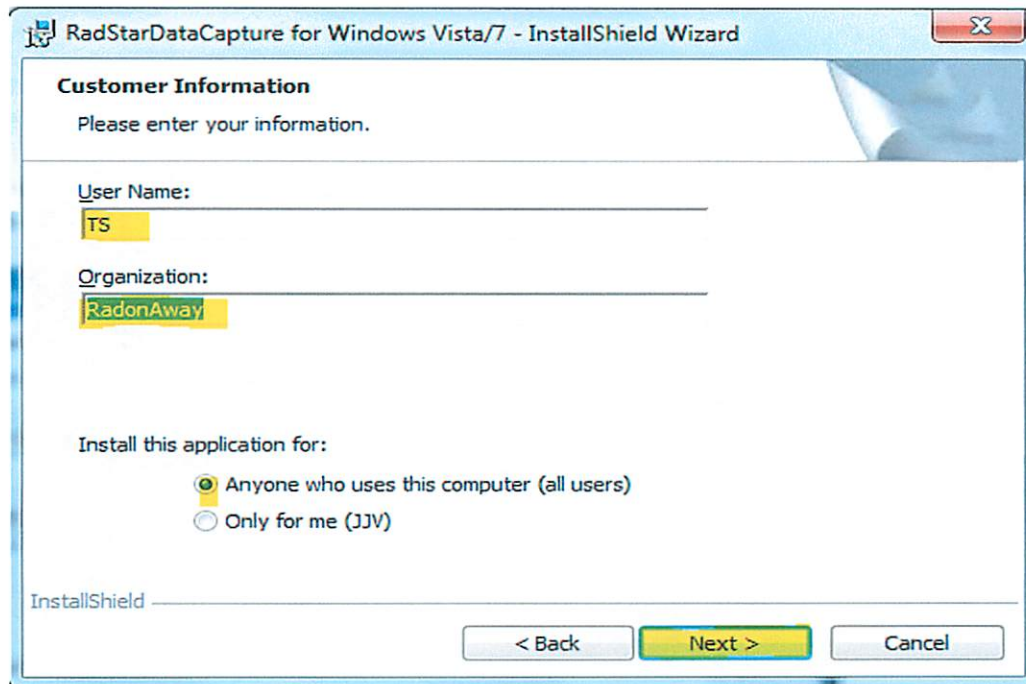
2. The Installation Wizard will appear. Click **“Next”**



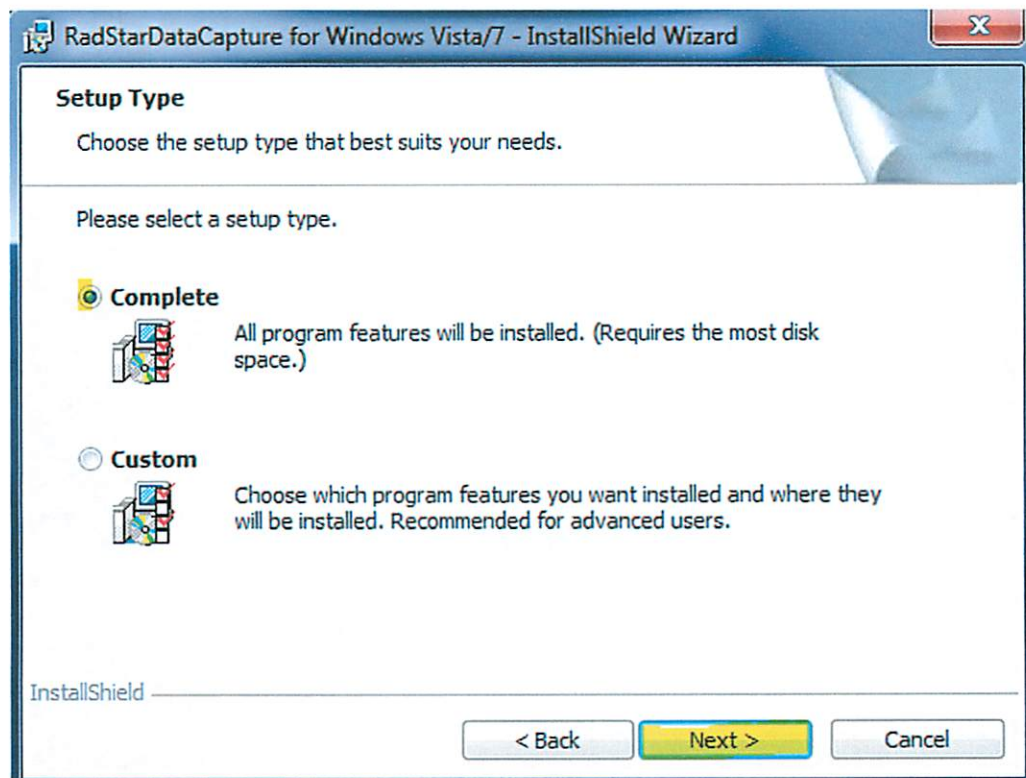
3. Click in circle next to **“I accept the terms in this license agreement”** and then click **“Next”**.



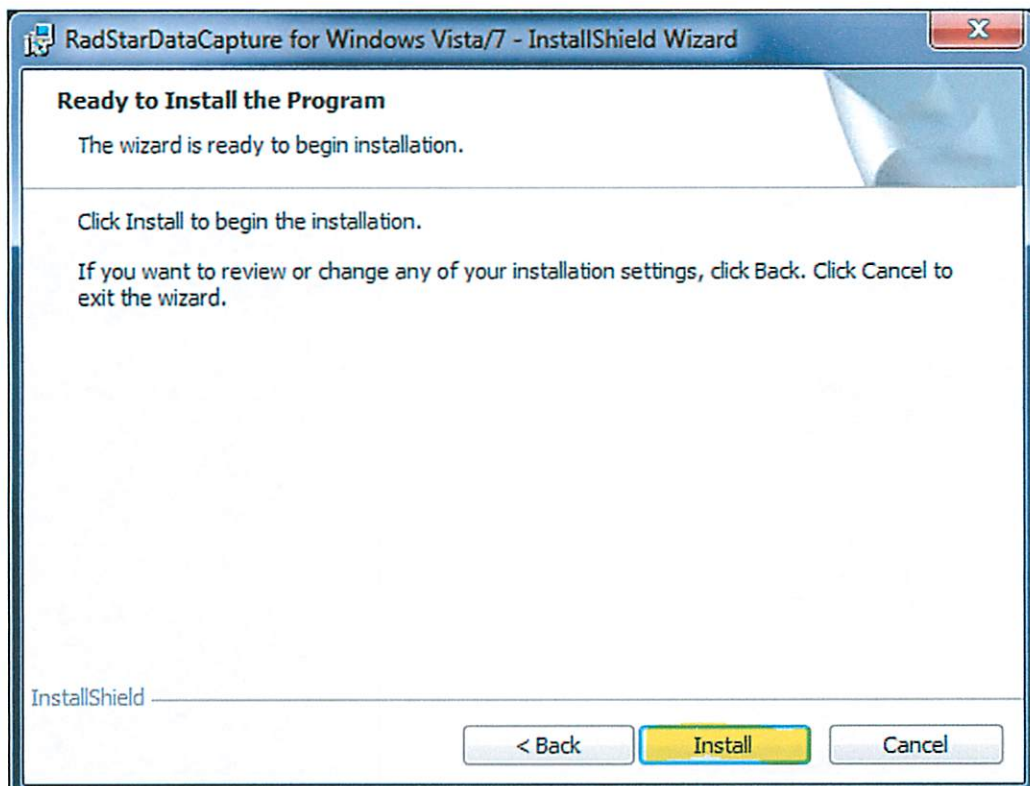
4. Type in your user name and organization. Next chose one of the options under “Install this application for:” and then click “**Next**”.



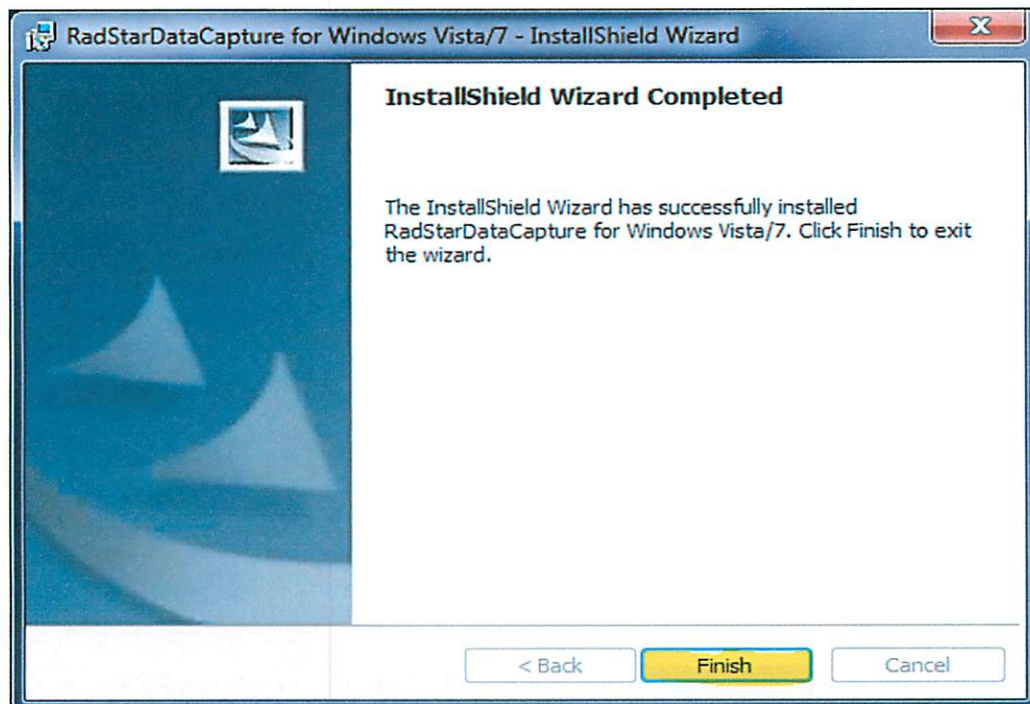
5. Customize your install or click in the Circle next to “Complete” and then click “**Next**”.



6. Click ***Install***.



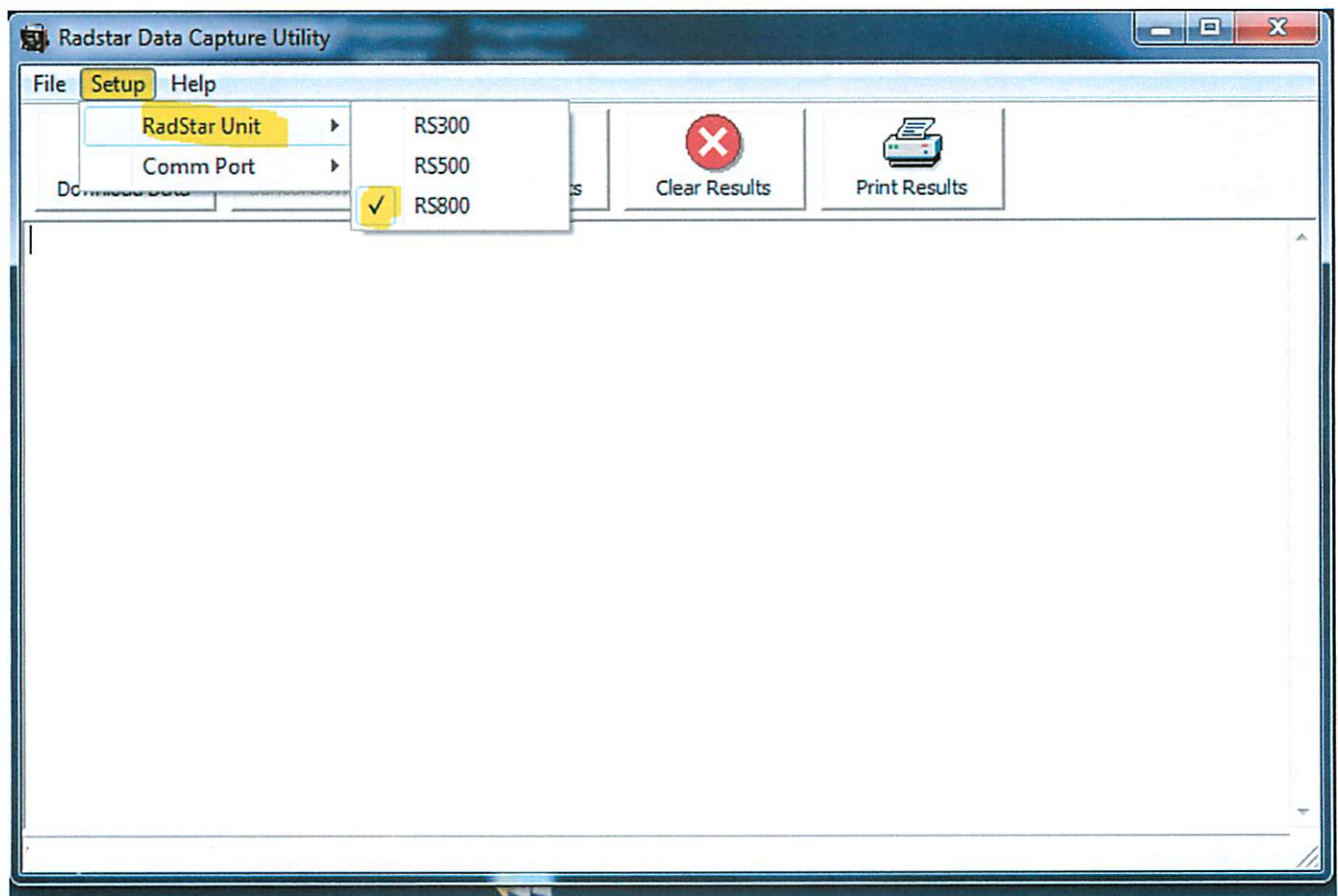
7. Click ***Finish*** to complete the installation process.



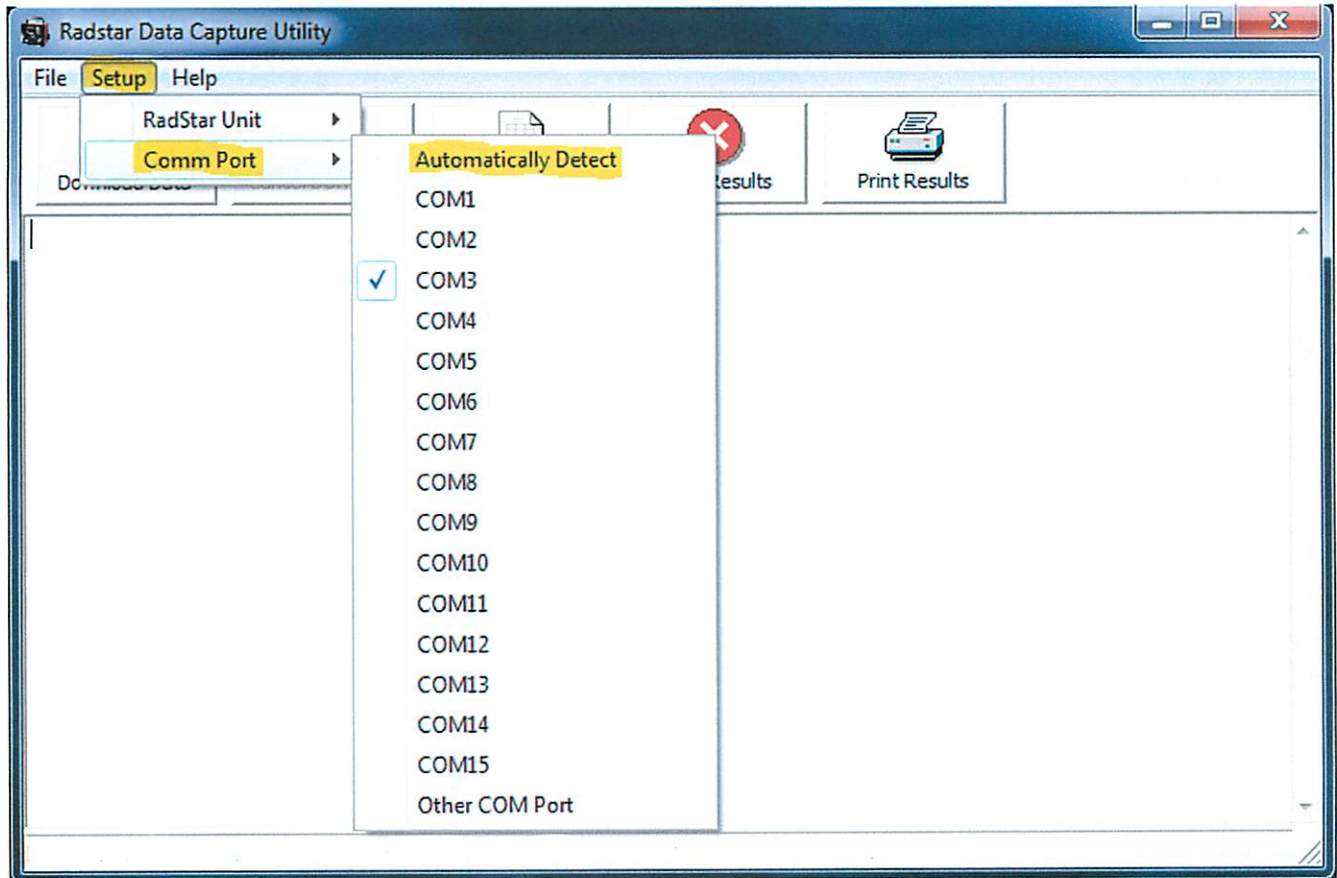
8. The “RadStar Data Capture” Icon will appear on your DeskTop. Double Click to start the RadStar Data Capture Program.



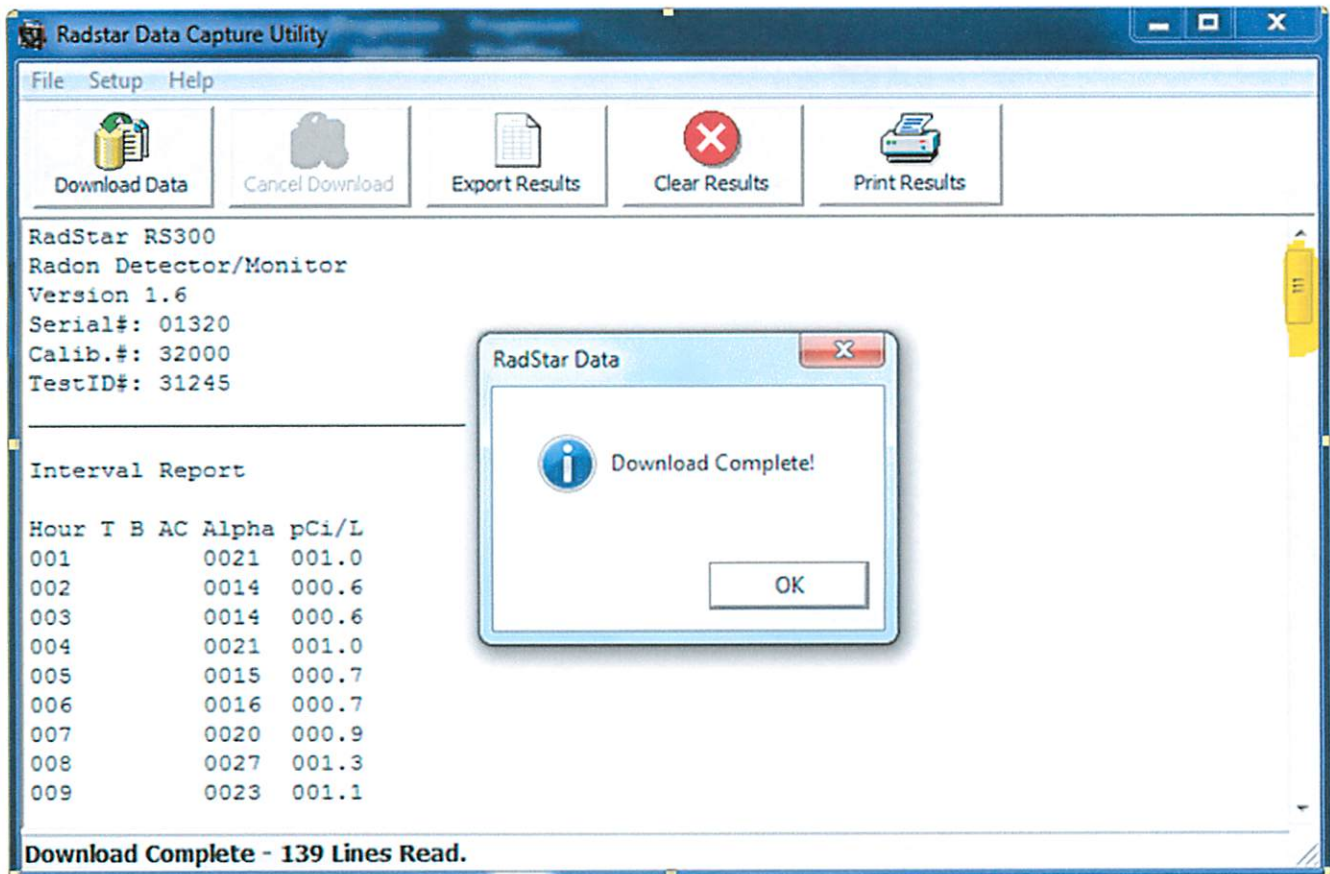
9. When the “Radstar Data Capture Utility” is started chose the model of your Radstar by clicking on “**Setup**” then clicking on “**Radstar Unit**” and clicking the model of your Radstar (i.e. 300, 500, 800). Note: Your selection of the “Radstar Unit” will be retained and does not need to be set again unless you reinstall the “Radstar Data Capture Utility” or use another model Radstar.



10. The “**Comm Port**” setting is set automatically each time you start the Radstar Data Capture Utility. You do not have to set this value however, if your data is not downloading it may be because the Comm Port value is not properly set. To set this value click on “**Automatically Detect**”, cancel the download and try it again.



11. Below is a sample of a download screen from a RS300. Please note that only part of the data is shown in this screen example. All the data can be viewed by use of the scroll bar (shown on right)



12. The Radstar data can be exported to an Excel Spreadsheet / Graph or printed on a printer via use of the dropdown menu found under the “File” option or via use of the “**Export Results**” and “**Print Results**” button.

