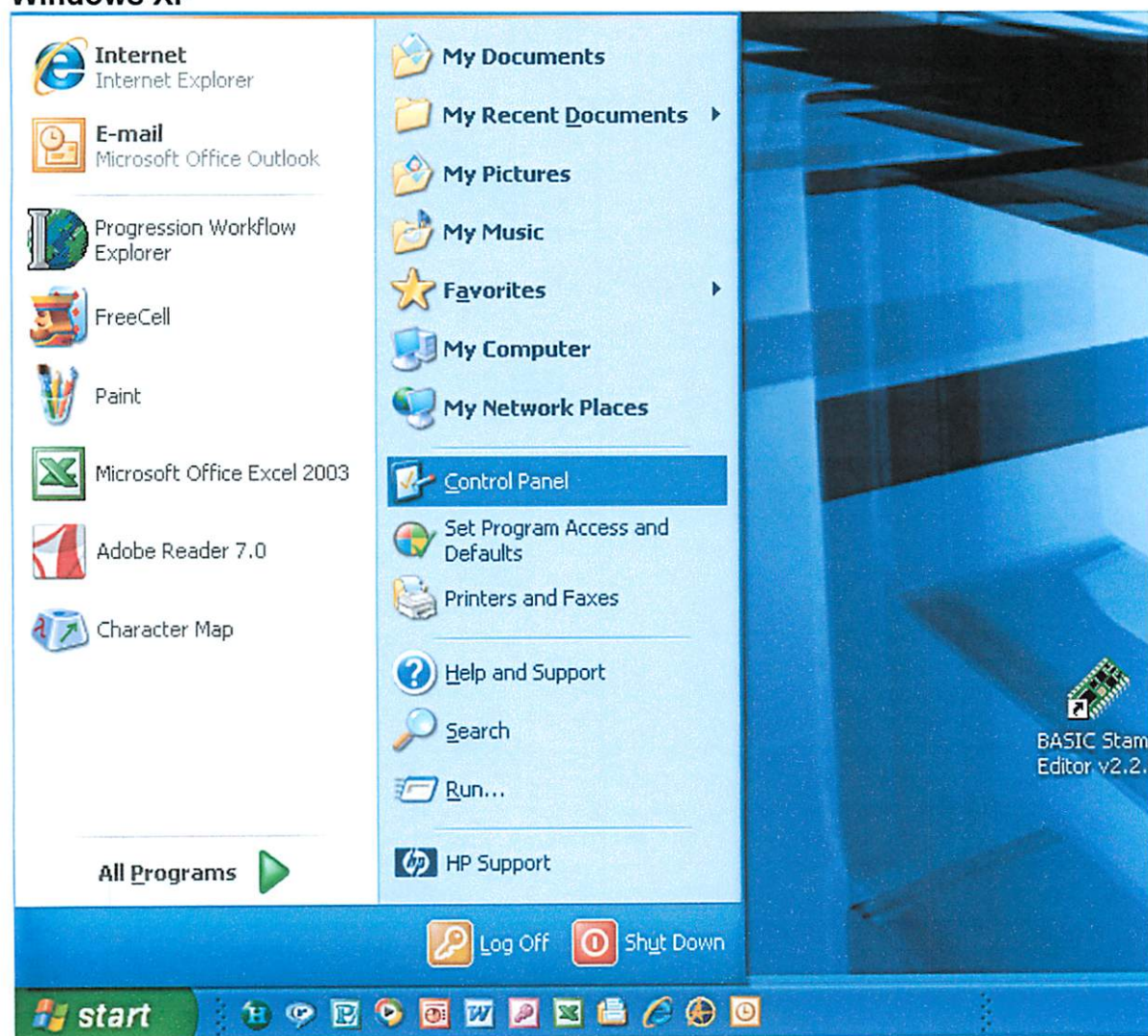


## Uninstalling the USB to Serial Port Driver

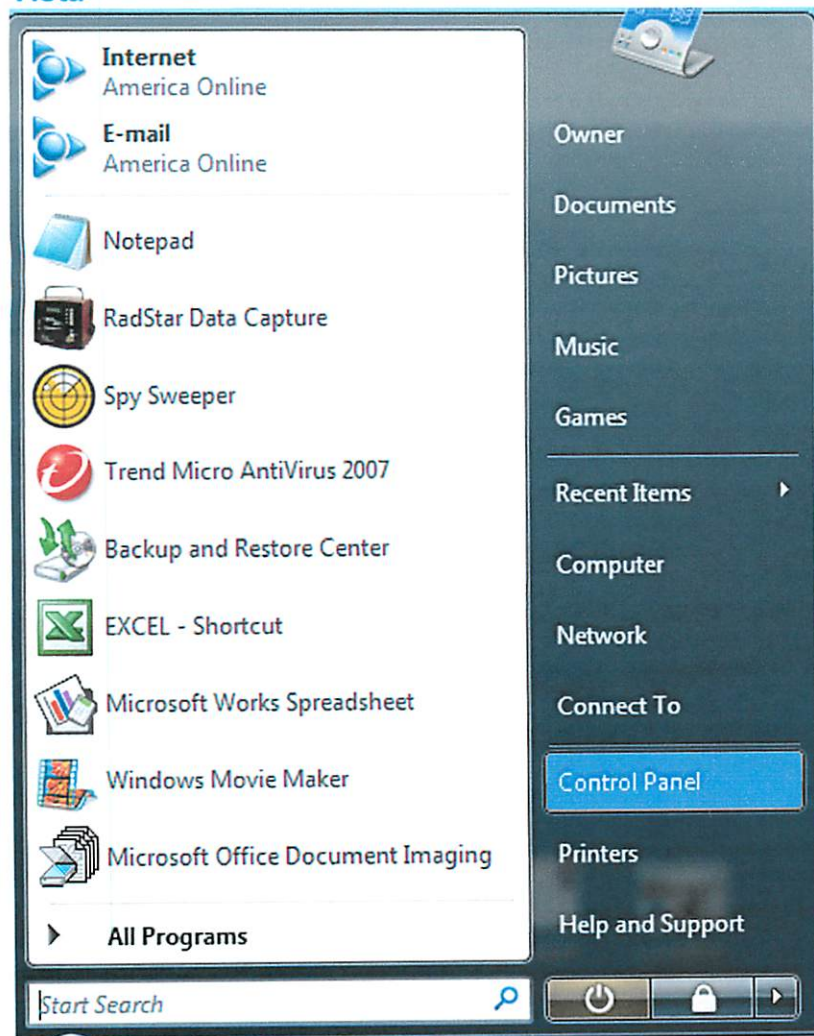
Note: Windows Vista Instructions where different are shown [ xxxxx "XXXXX" ]

1. Click, "**start**", and click "**Control Panel**".

### Windows XP

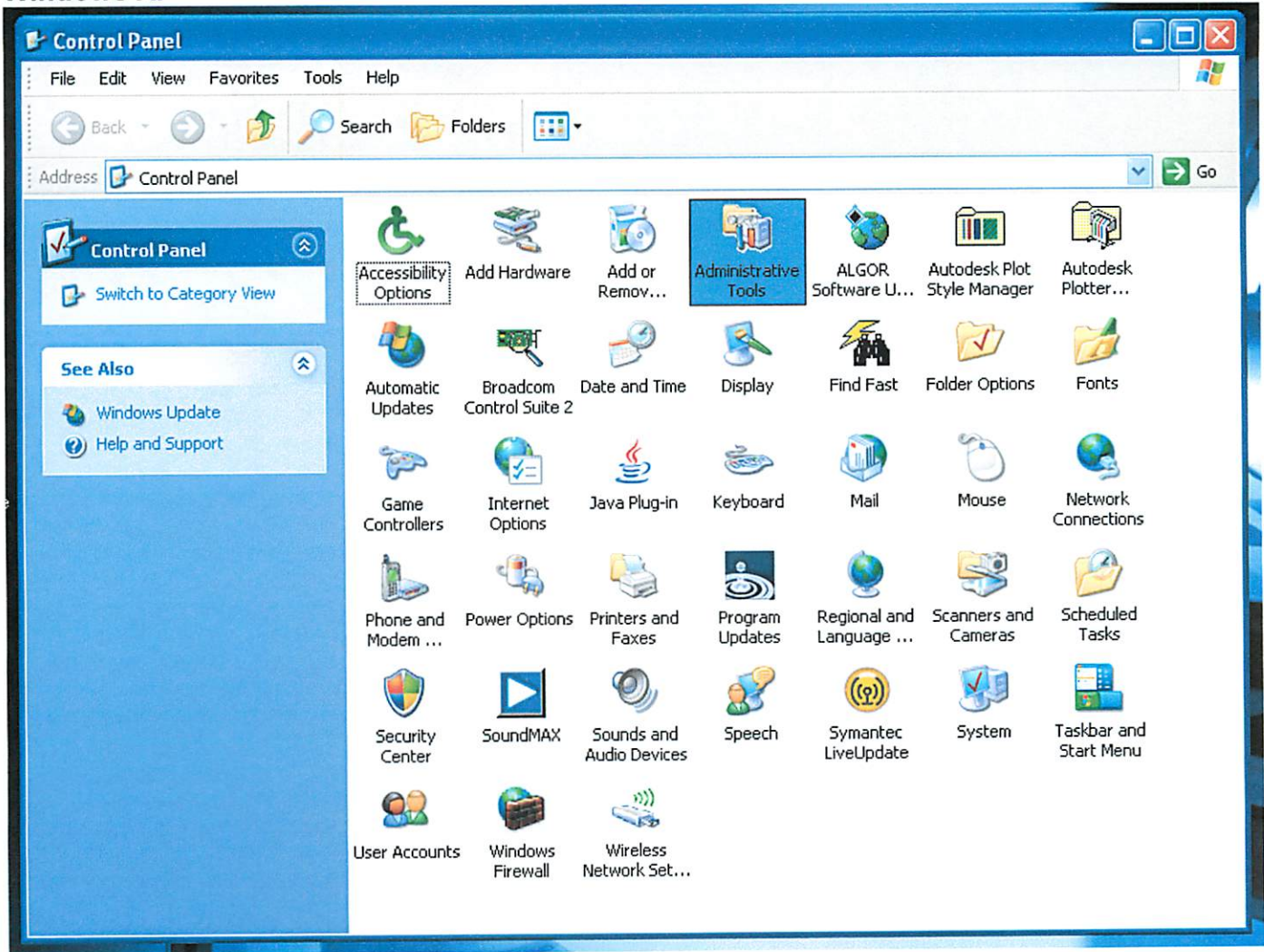


## Vista



## 2. Double Click "**Administrative Tools**"

### Windows XP





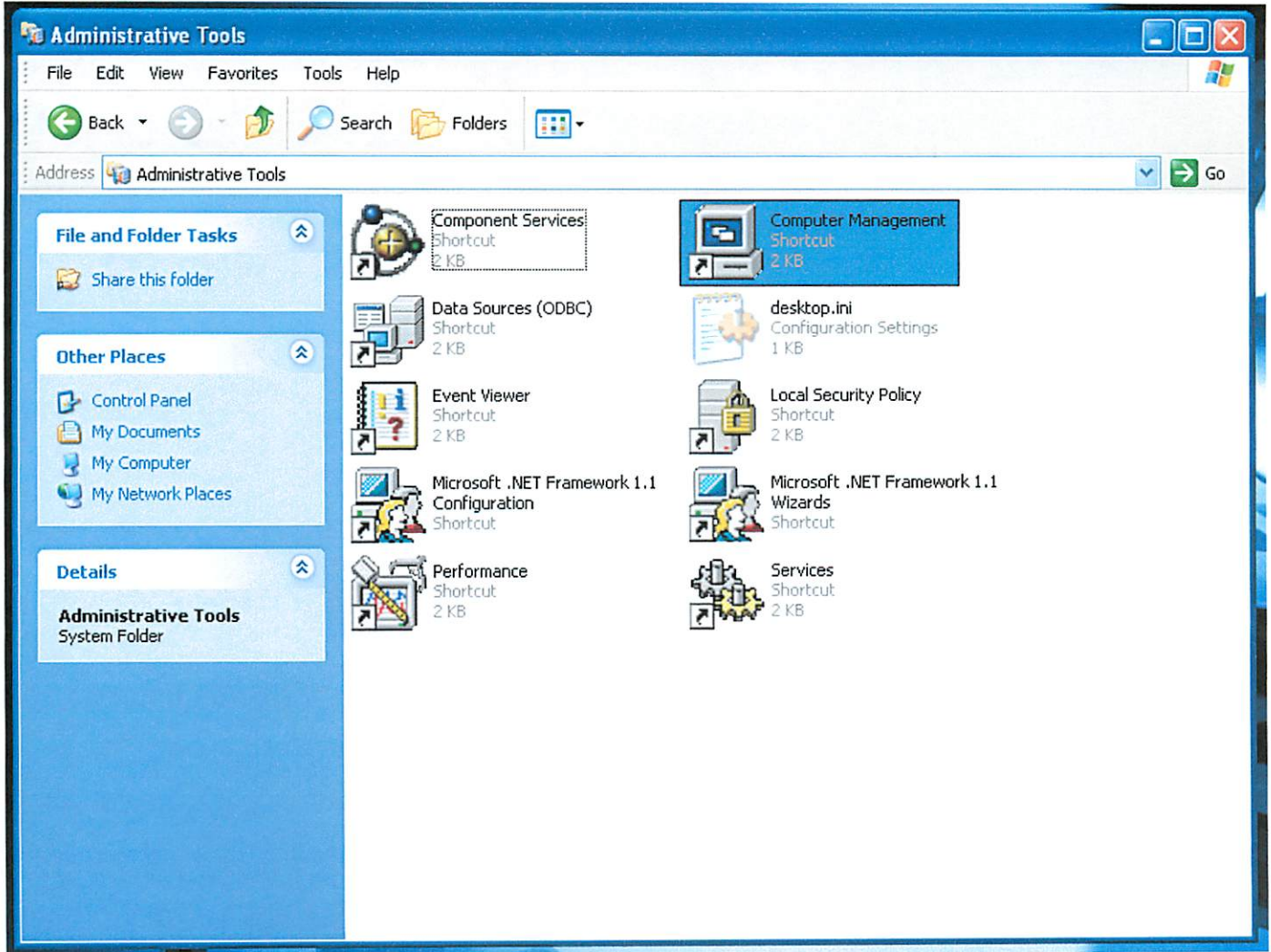
[Click "**System and Maintenance**".]

## Vista



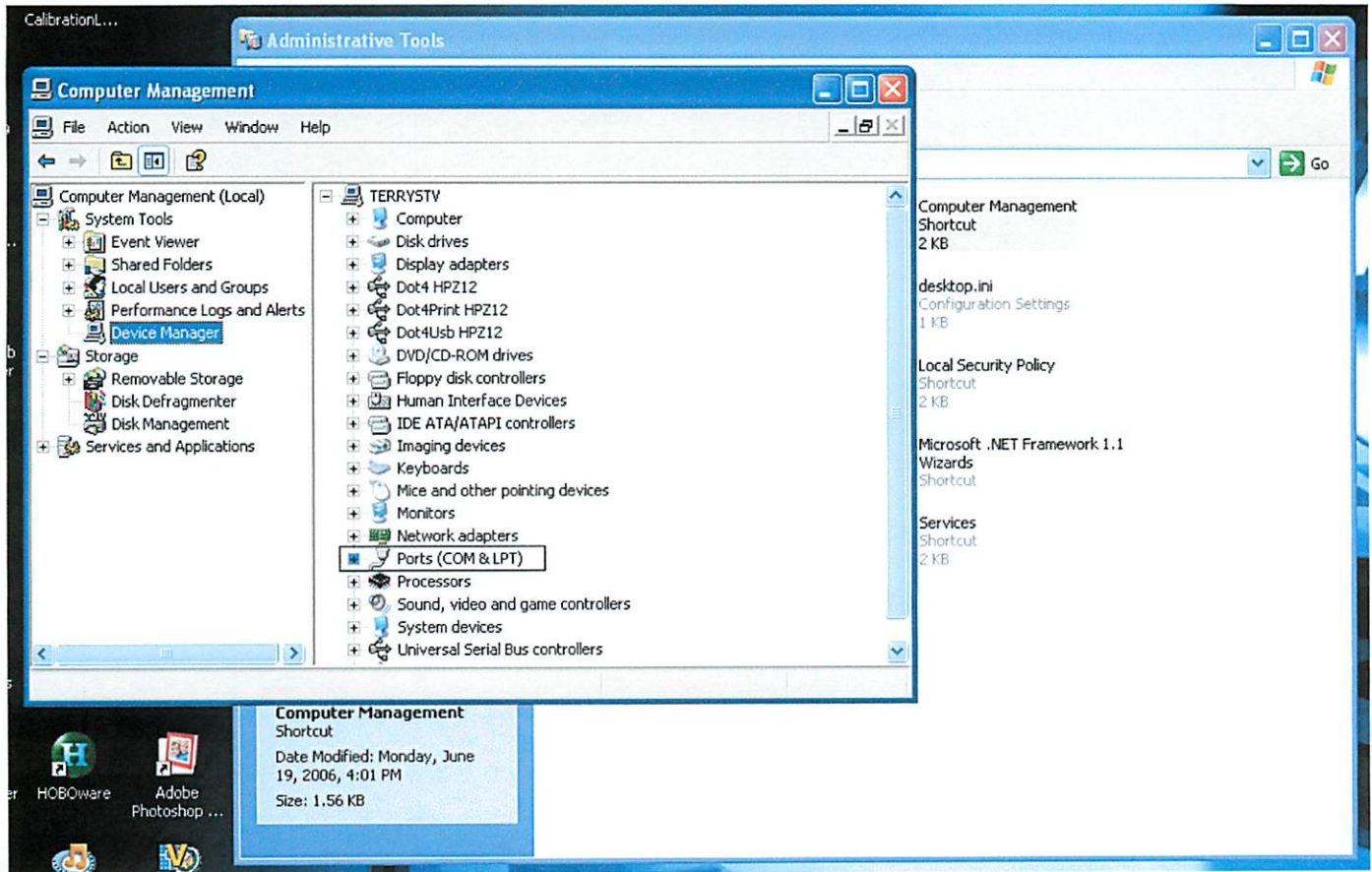
3. Double Click "**Computer Management**". [ [Go to 4.](#) ]

## Windows XP



4. Click "**Device Manager**" then click on the "+" in the box beside "Ports (COM & LPT)"

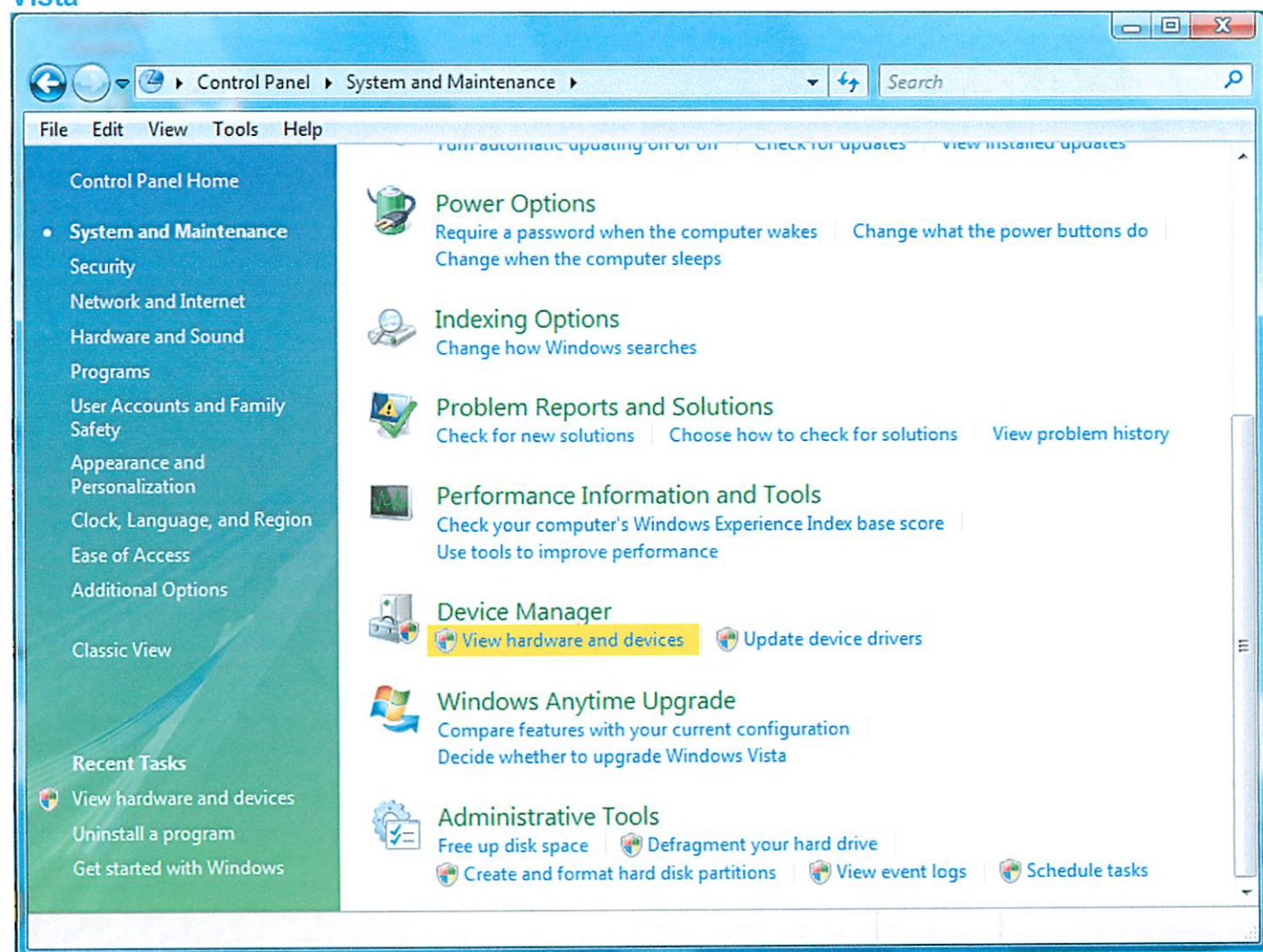
## Windows XP





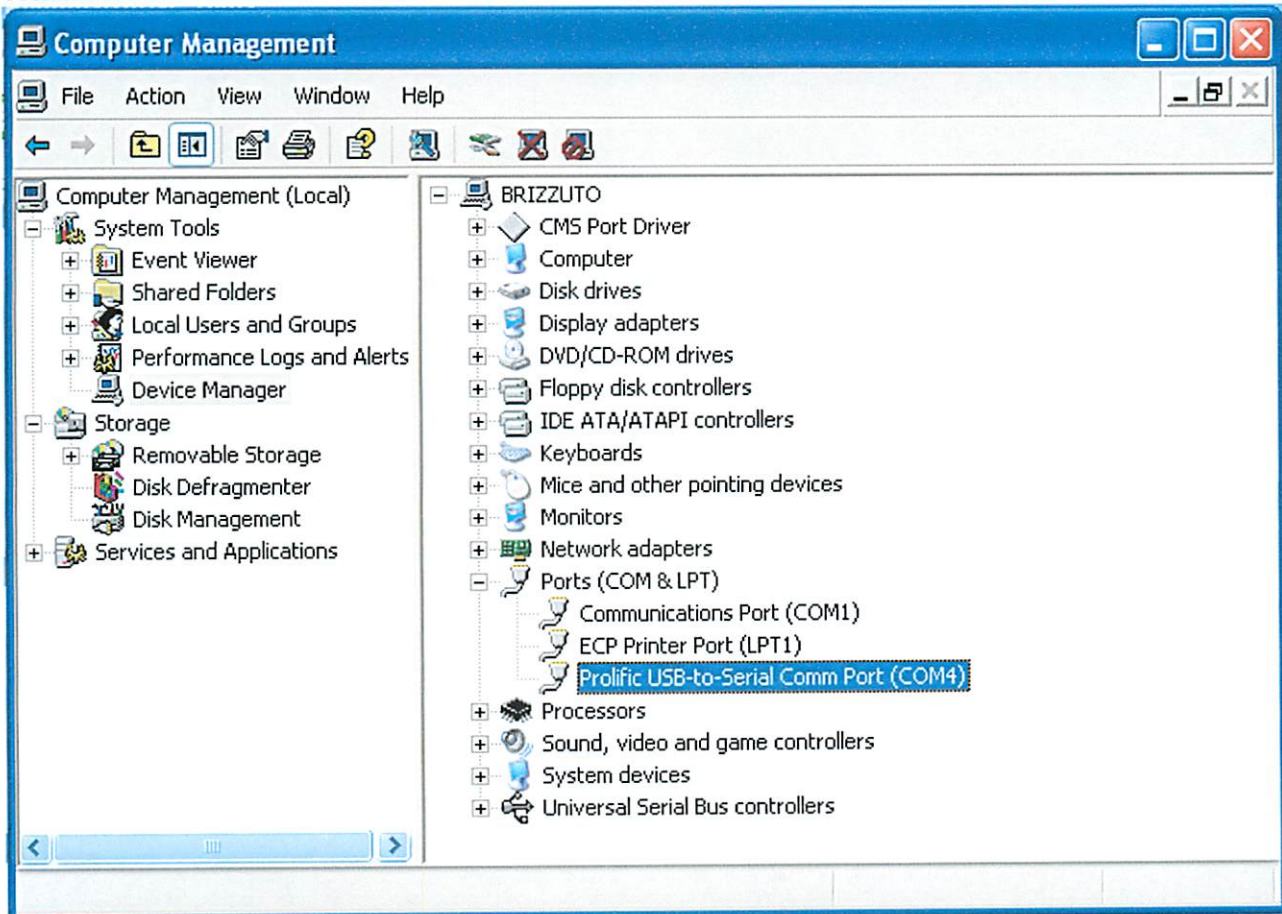
[ Scroll Down and click "**View Hardware and Devices**". Click "**Continue**" in the pop up User Account Control Window (not shown) ]

## Vista



5. Double Click on the ***"Prolific USB-Serial Comm Port"***.

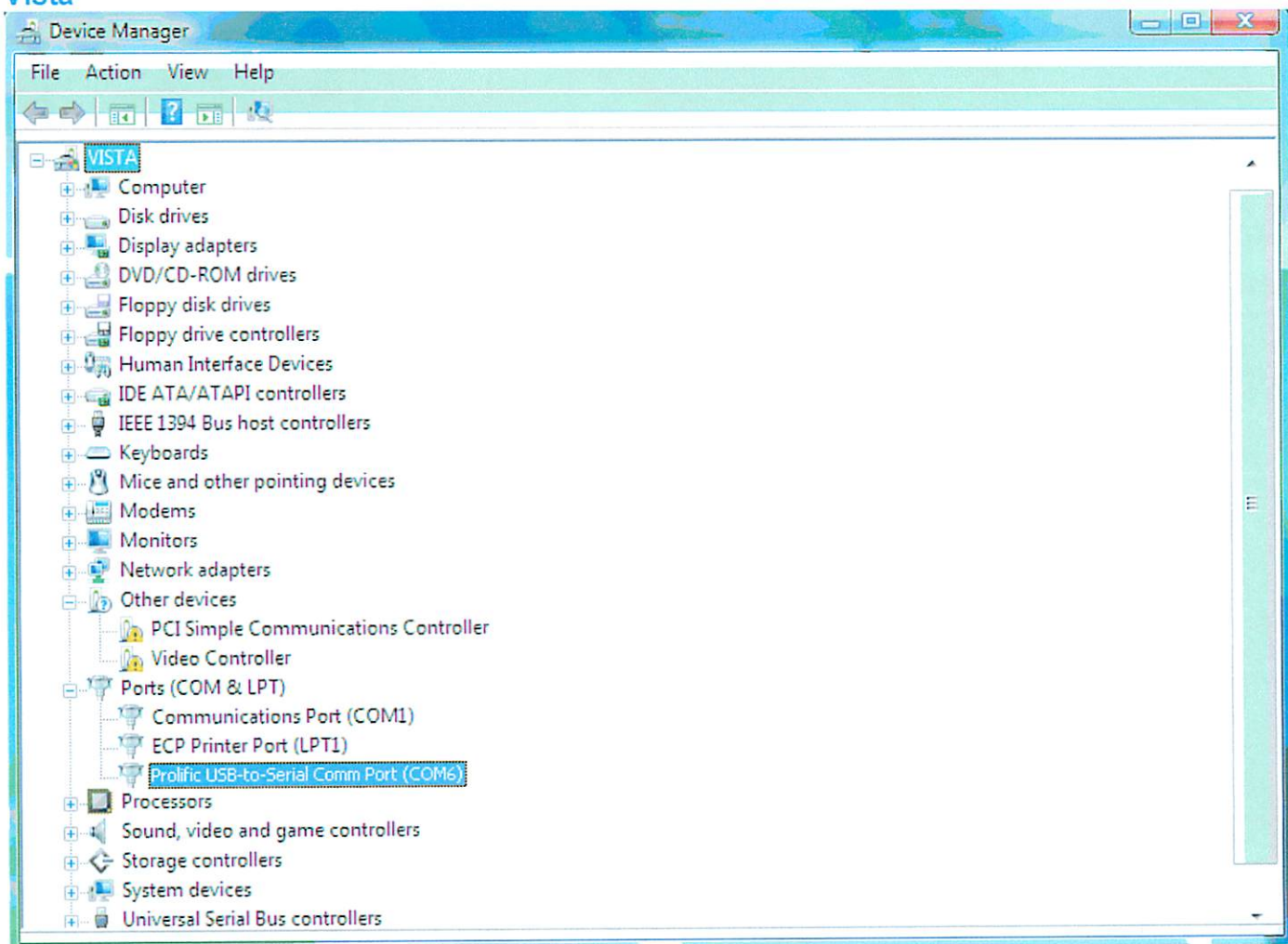
## Windows XP



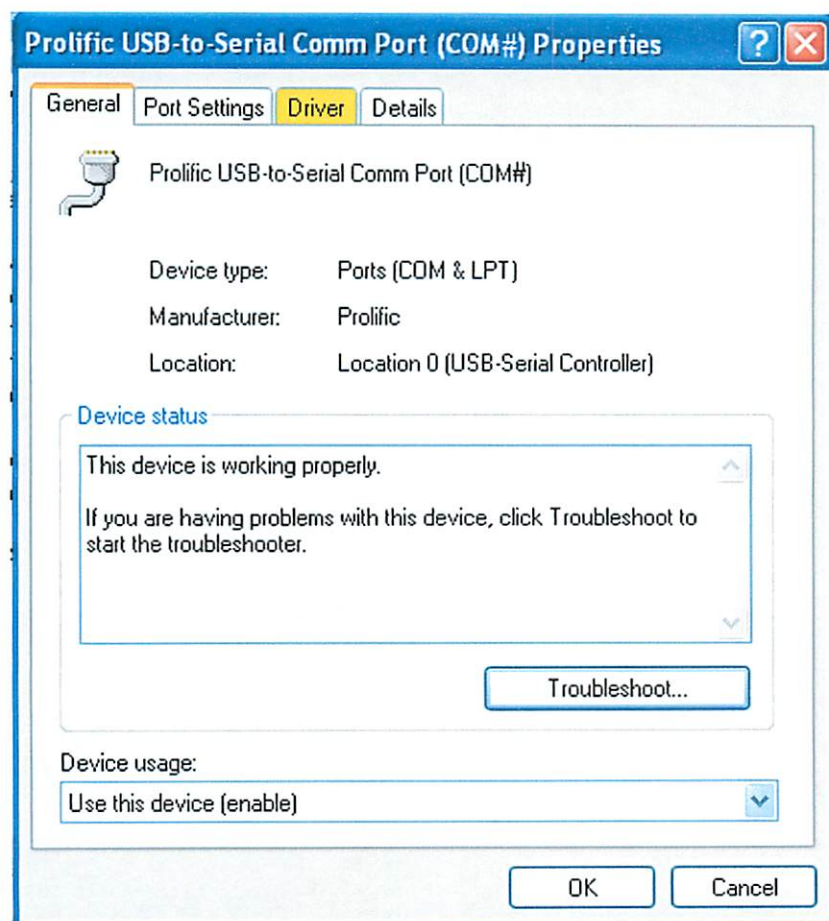


[Double Click on the “*Prolific USB-Serial Comm Port (COM#)*”.]

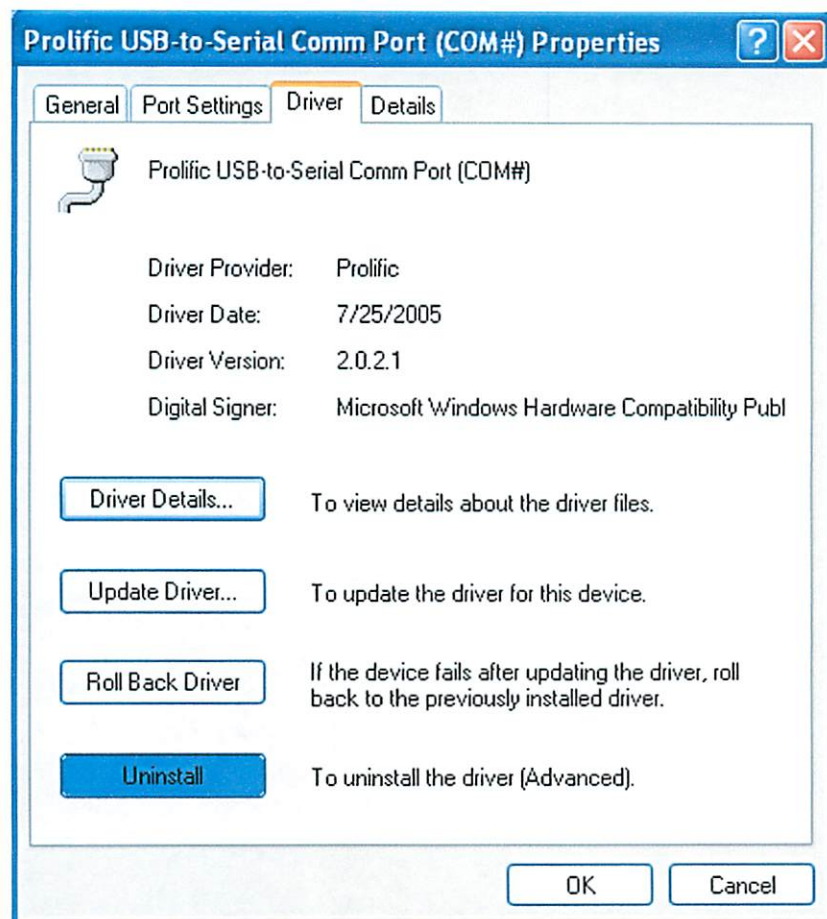
## Vista



6. Click on the ***Driver*** Tab (for XP & Vista).

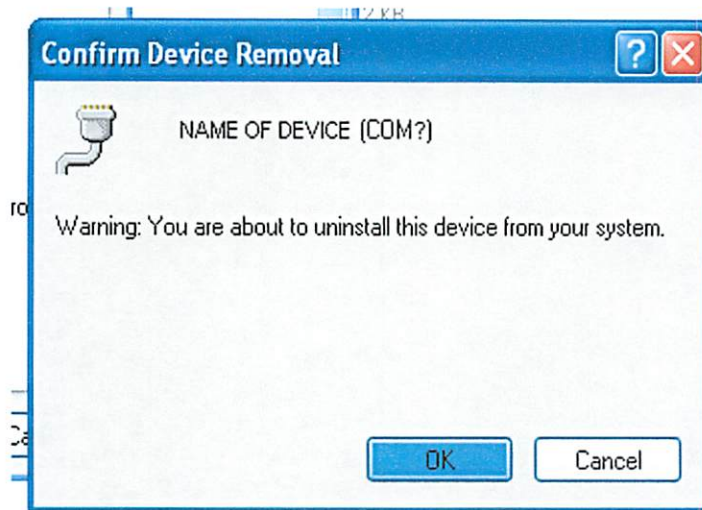


7. Click "**Uninstall**" (for XP & Vista).





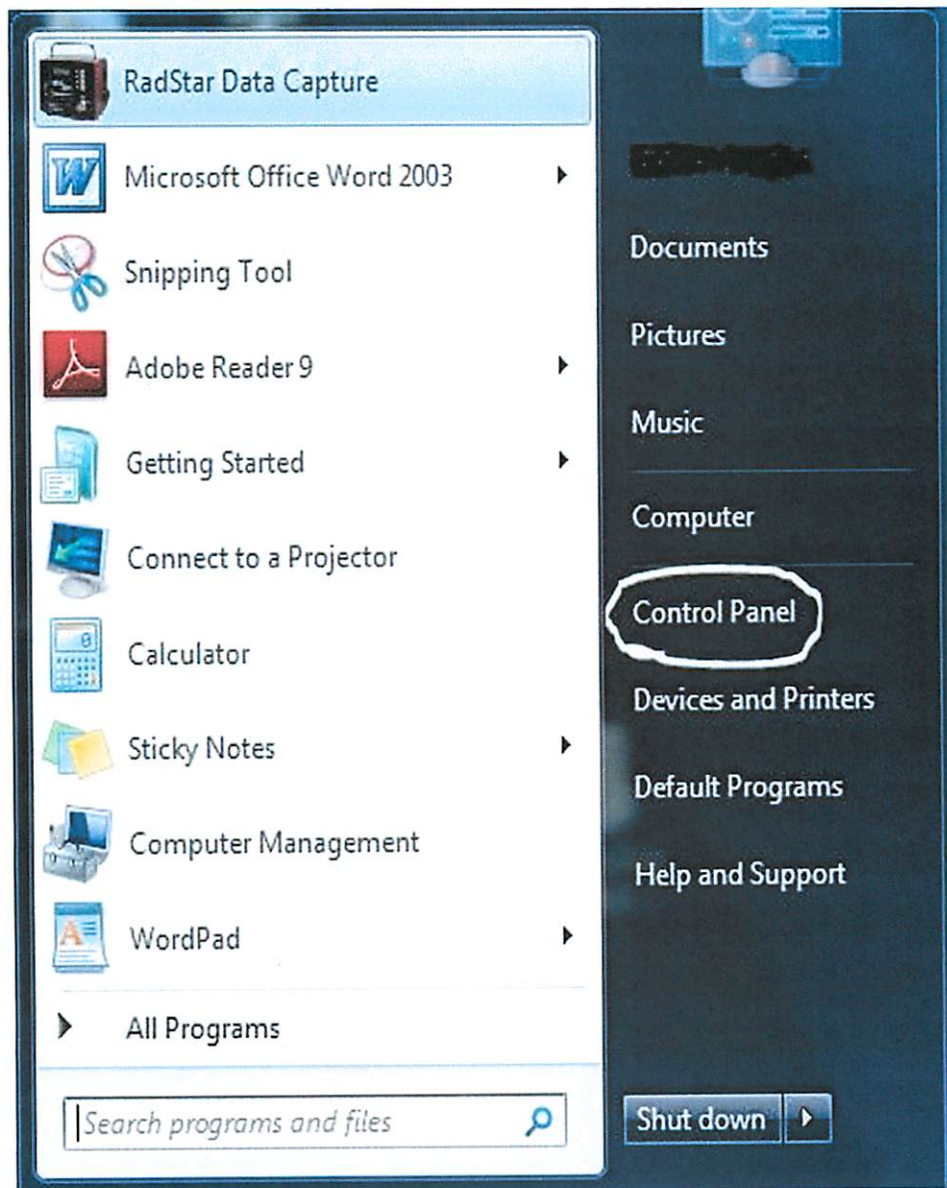
8. A “**Confirm Device Removal**” window will pop up. Make certain that this is the device you want to remove, if certain, click “**OK**” otherwise click “**Cancel**”



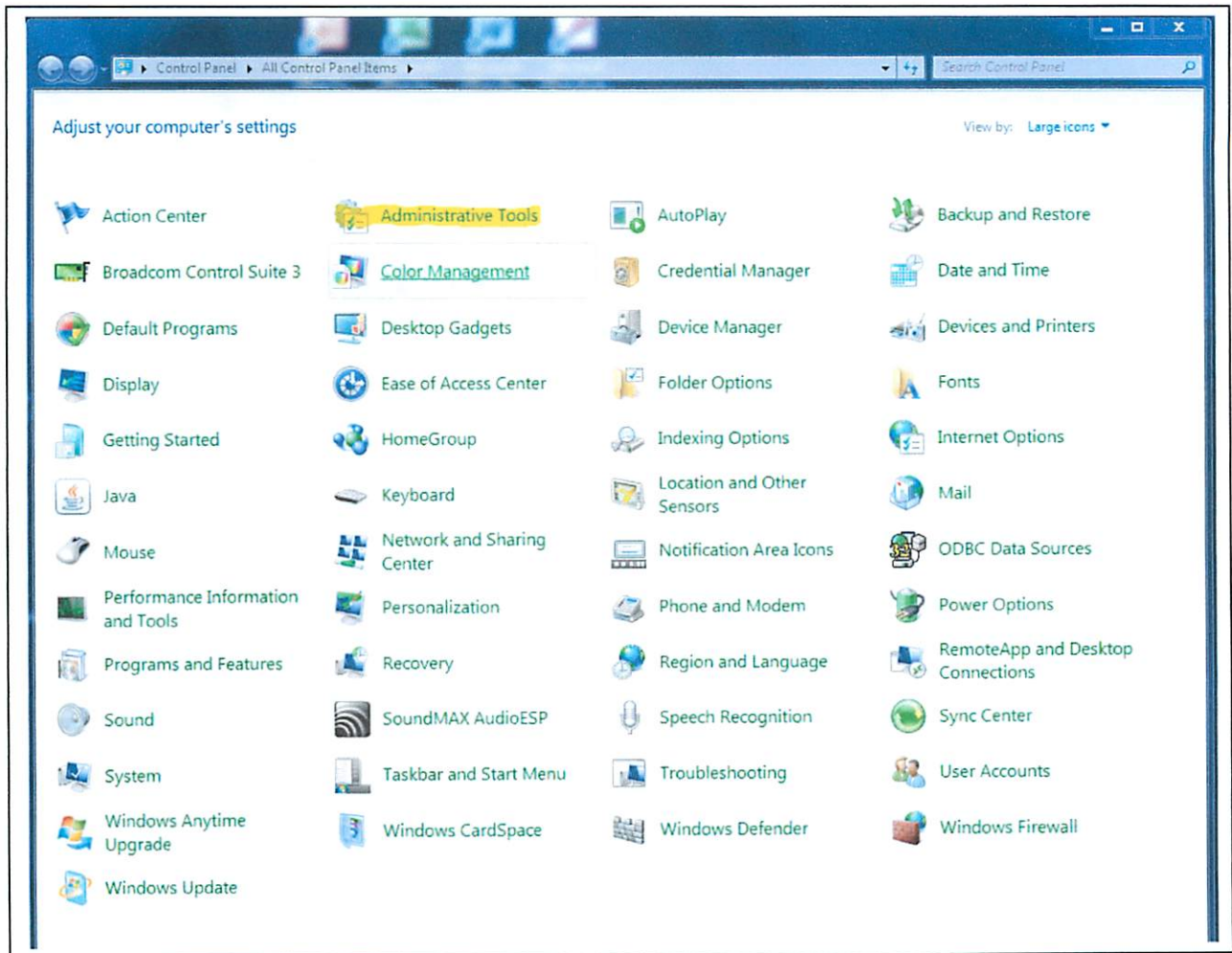
## SUPPLEMENT 1 – WINDOWS 7 INSTRUCTIONS.

### Uninstalling the USB to Serial Port Driver

1. Click "**Control Panel**" from Windows 7 "Start" window.

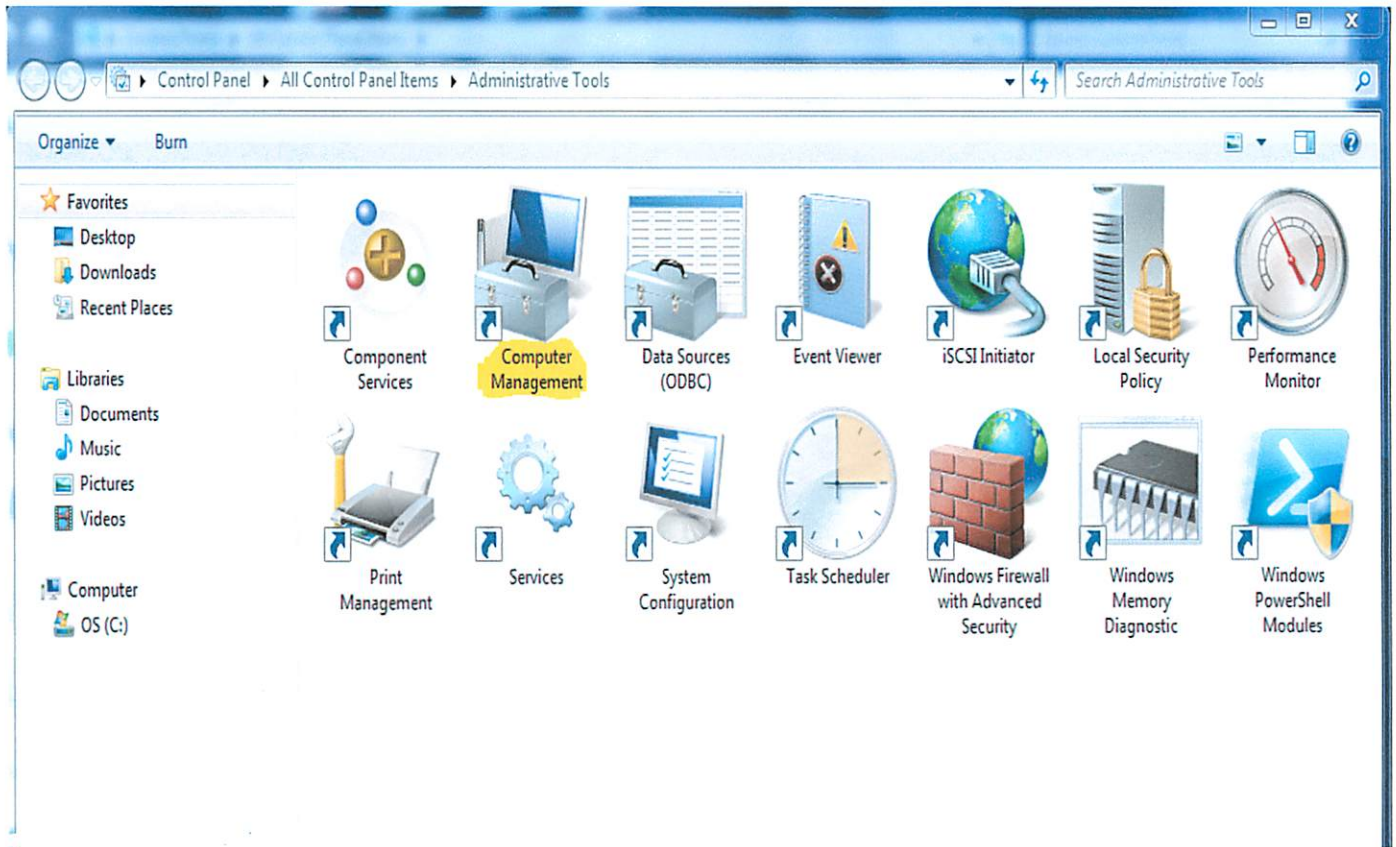


2. Click "**Administrative Tools**".

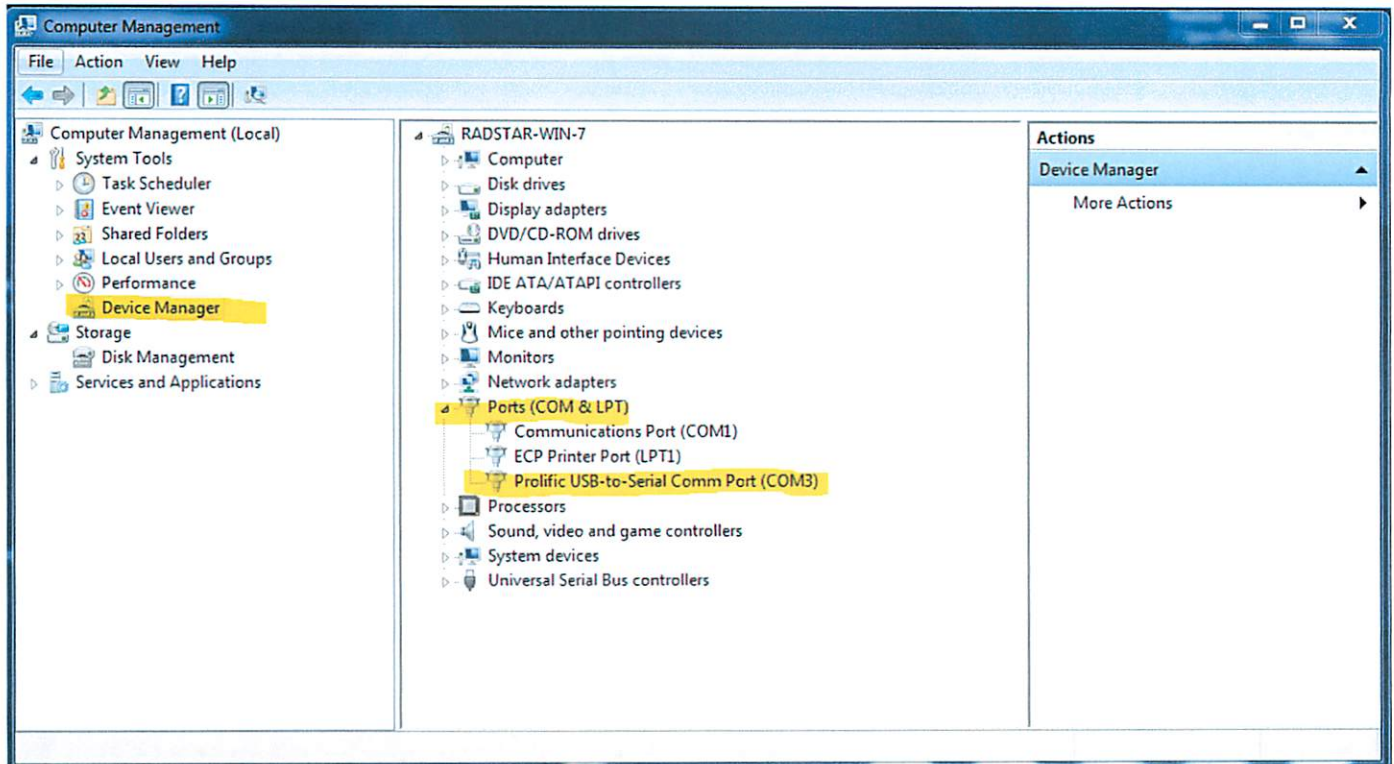




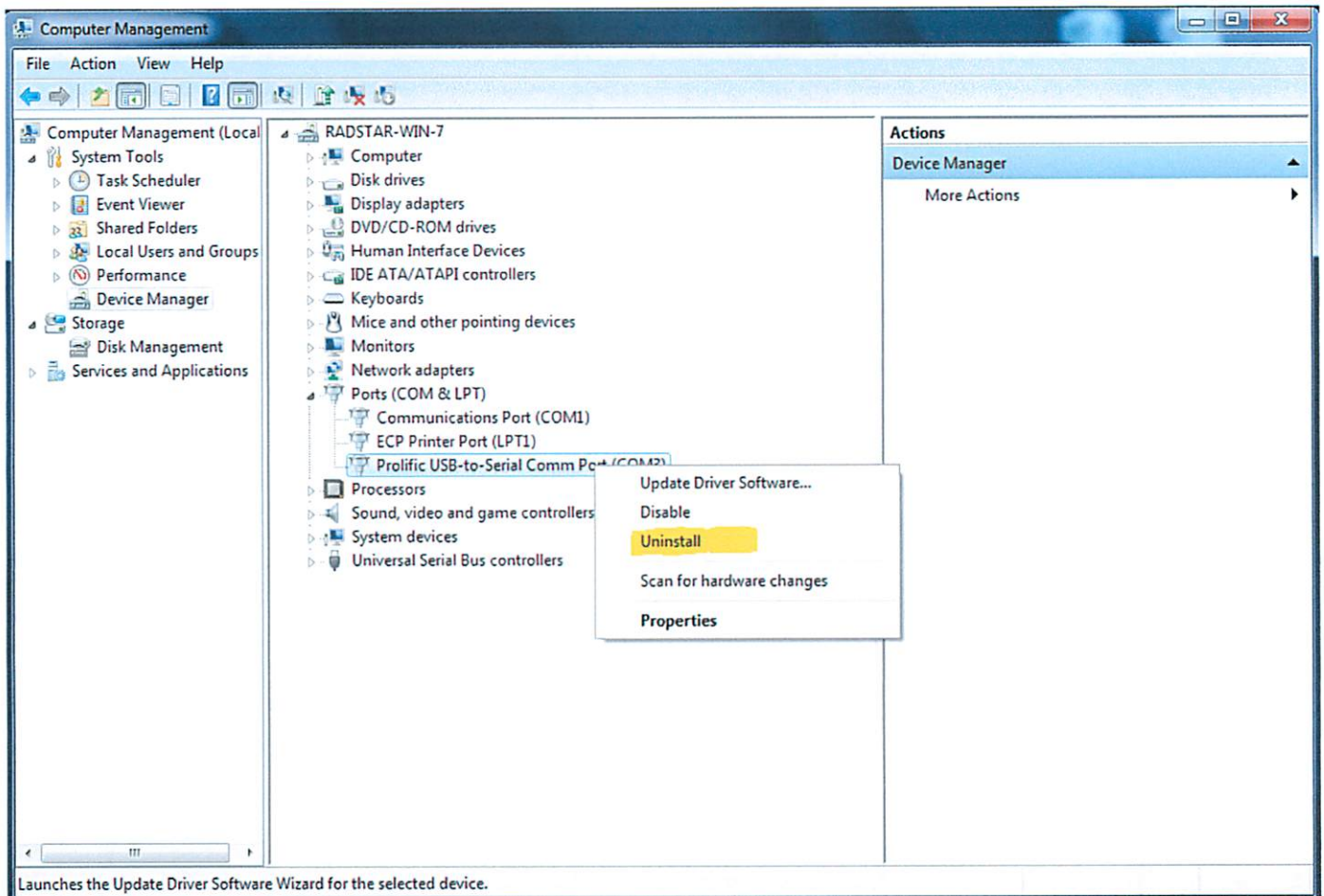
3. Double Click ***“Computer Management”***.



4. Click on **“Device Manager”**.
5. Click on small arrow to the left of **“Ports (COM & LPT)”**.
6. Chose **“Prolific USB-to-Serial Comm Port (COMx)”** item and right click to display drop down menu.



7. From the drop down menu chose “Uninstall”.



8. On the “Confirm Device Uninstall” screen check “Delete the driver software for this device.” and then click “OK”. Device and device driver is now uninstalled.

